



**Baron**<sup>®</sup>

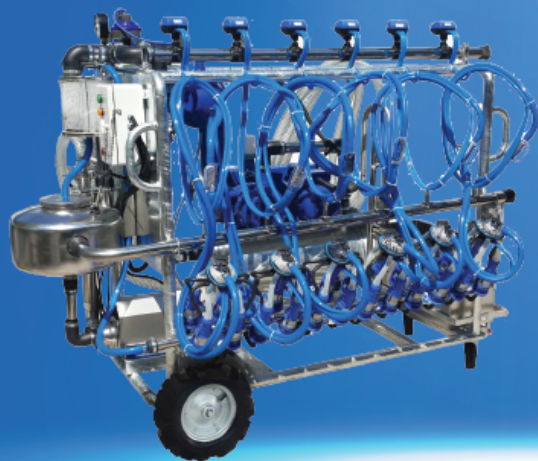
DAIRY & FARM SOLUTIONS

# Product Brochure 2020



**FAMILY  
BUSINESS**





## MOBILE MILKING PARLOUR

The best way to carry your Parlour to your cows and milk them.

- 1x6 Mobile Milking Unit
- 6 Milking Clusters
- 6 Pneumatic Pulsators (Optional Electronic Pulsators)
- 2 Swing Wheels (150 mm)
- 2 Inflatable Wheels (400 x 80 x 20 mm)
- Receiving Jar (30 lt)
- Sanitary Trap (5 lt)
- Servo regulator

- Vacuum meter (100 mm)
- 750 lt /min Vacuum Pump
- Electric Motor 2,2Kw (optional 220V or 380V)
- Weight 400-450 kg

- Dimensions 130 x 235 x 190 cm

Mobile Parlour Capacities: 1\*6, 2\*4, 2\*6, 2\*8, 2\*10

Available for Cow, Goat, Sheep, Buffalo Milking

Note: Specifications belongs to 1\*6 Mobile Parlour.





## MILK COOLING TANKS

### -VERTICAL COOLING TANKS - BOTTOM GROUP

#### Capacity

50 Lt, to 2500 Lt.

### -VERTICAL COOLING TANKS - HIGH GROUP

#### Capacity

50 Lt, 100 Lt, 150 Lt, 200 Lt, 300 Lt

### -HORIZONTAL COOLING TANKS - ROUND

#### Capacity

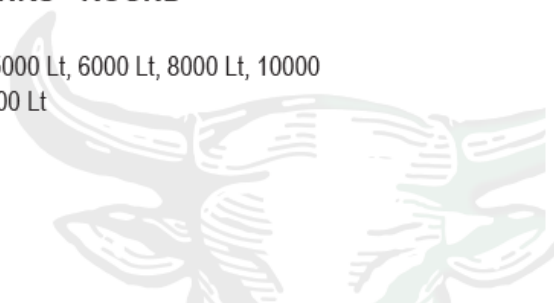
2000 Lt, 2500 Lt, 3000 Lt / 4000 Lt, 5000 Lt, 6000 Lt, 8000 Lt, 10000 Lt, 12000 Lt, 16000 Lt, 20000 Lt, 25000 Lt

### -HORIZONTAL COOLING TANKS - HALF ROUND

#### Capacity

2000 Lt, 3000 Lt

FOR MORE INFORMATION, PLEASE SCAN THE QR CODE.





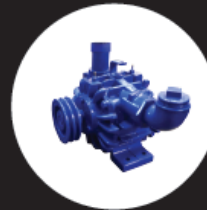
# PORTABLE MILKERS

## INFORMATIONS

<b>POWER TYPES:</b>	ELECTRIC, PETROL ENGINE OR DUAL
<b>BUCKET CAPACITIES:</b>	20 LT, 25LT, 30LT, 40LT OR 50 LT
<b>BUCKET TYPES:</b>	STAINLESS STEEL, ALUMINIUM
<b>PUMP CAPACITIES:</b>	200 LT to 1000 LT CAPACITIES
<b>ANIMALS:</b>	COW, GOAT, SHEEP OR BUFFALO
<b>MILKING POINTS:</b>	1 ANIMAL TO 12 ANIMALS
<b>STANDARD COLORS:</b>	RED, GREEN, BLUE, WHITE, BORDEUX
<b>SPECIAL COLORS:</b>	COULD BE PAINTED ANY COLOR UP TO 50 MACHINES ORDER VALUE
<b>PULSATOR:</b>	PNEUMATIC OR ELECTRONIC
<b>MILKING LINERS:</b>	SILICONE OR RUBBER
<b>SPARE PARTS:</b>	ALL SPARE PARTS AVAILABLE



## SPARE PARTS



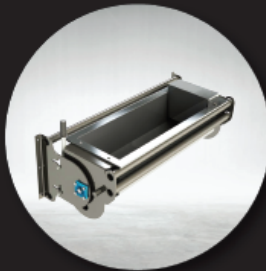
# FARM EQUIPMENTS



SWINGING COW BRUSH  
BRN-HYK-001



BARN COOLING FAN  
BRN-CFN-002



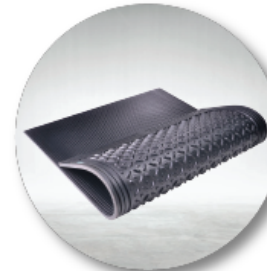
GROUP WATER BOWL  
BRN-CE-DHS-150



CATTLE FREE STALL  
BRN-CE-HD-001



COW HEADLOCK  
BRN-CE-HKS-001



COW MATTRESS  
BRN-HYT-001



FERTILIZER SCRAPER  
BRN-GSS-001



WHEELBARROW  
BRN-EA-001



CALF TAXI  
BRN-CE-BTA-001



CALF HOUSE  
BRN-CE-BUK-001



NON-FREEZING WATER BOWL  
BRN-DOS-002



CAST IRON WATER BOWL  
BRN-CE-HS-002  
PLASTIC WATER BOWL WITH FLOAT  
BRN-CE-HS-005



FEEDING BUCKET  
BRN-CE-EK-001



FEEDING BOTTLE  
BRN-CE-BB-001

# FEEDING SYSTEMS



## CALF FEEDING TAXI

### SPECIFICATIONS

- The material is completely 304 quality stainless steel
- Milk and feed can be prepared.
- Wheeled
- Dispensing system with automatic hand pum
- Adjustable mixer speed
- Low and high temperature control

- Stainless DN40 drain valve
- Expansion safety valve
- The battery is automatically charged by the system during feed preparation
- Capability to display product and chamber temperature on two separate screens



## LAMB FEEDING UNIT

### SPECIFICATIONS

- 30-60-90-120 lamb suckles
- 100-150 lt
- Complete chrome double Shell
- Double heat meter
- Pasteurization/ feeding with milk



## PORTABLE LAMB FEEDER

### SPECIFICATIONS

- 30-60-90-120 kid and lamb suckles
- 125-175-225 lt
- Complete crom double stall
- Double heat meter
- Pasteurization/ feeding with milk
- Manual washing
- Battery powered (optional)
- Dosing pump, Dosing gun



## CALF FEEDING ROB

### SPECIFICATIONS

- Automatic calf recognition RFID
- Daily increase decrease food serving
- Spontion feeding (ad libitium)
- Max 25 calves stall
- 1-4 stall feeding
- Daily report





## GARDEN SPRAYERS

### BS 800 T

Capacity: 800L

Tank Material: Polyethylene

Pump: 3 or 4 Membranes

Pump Speed: 540 RPM

Wing Distance: 10m - 12m

Nozzle Type: Conical

Pressure: 50 Bar

Mixer: Hydraulic

Weight: 210 Kg

Water Intake: Yes

Hose: Optional

Operation Type: Behind Tractor

Note: For more information and all models please scan QR code.



## BIRD & WILD ANIMAL SCARERS

### AREAS OF USAGE

- Apple, cherry, sour cherry, apricot, hazelnut orchards, wheat, sunflower, chickpea, corn, muskmelon, watermelon fields.

- Tomato, potato gardens, vineyards, grain bins, stores, flour mills, factories. Houses, Resorts, Hotels.

- Fish farms.

- Airports, etc.

- Against unwanted bird and wild animals.

Note: For more information and all models please scan QR code.





[www.baronagri.com](http://www.baronagri.com)

**BARON TARIM VE SÜT TEKNOLOJİLERİ**

Atatürk Mah. İbrahim Ağa Cad. No:7/9 Gerze/Sinop/Türkiye  
+90 542 8267473 - info@baronagri.com